



MATH PLACEMENT

The Mathematics, Engineering, and Physics department evaluates each student's math skills before determining where that student should begin in the Math course sequence. Completing the Math Placement process will help ensure that you start with the Math course that's right for you.

The Math placement may be waived dependent on standardized test scores, high school GPA or previous college credit. Incoming students are encouraged to talk to Student Services to determine if the Math placement is required.

Online Math Placement

Cecil uses ALEKS PPL for Math Placement. The ALEKS assessment is an adaptive assessment meaning that the questions get easier or harder depending on how you answer the previous question. The question topics range from Pre-Algebra to Pre-Calculus. There are 30 questions total. You can use a calculator and scrap paper, but no outside resources. The first attempt is a practice attempt. Based on your practice, ALEKS will generate topics for you to practice in order to improve your placement when you take the proctored assessment. People who take the time to practice typically improve their score by 20 - 30 points.

Follow the information on the reverse to start the assessment process. You can use up to two practices and two Proctored Assessments.

If you have any questions about this process, please contact the Academic Success Center at ASC@cecil.edu or 443-715-3292.

Online Math Placement ALEKS Instructions

Follow the directions below to create your account:

1. Open any web browser and go to www.aleks.com
2. Create a new account by clicking "Sign Up New Student?" at the top right of the screen.

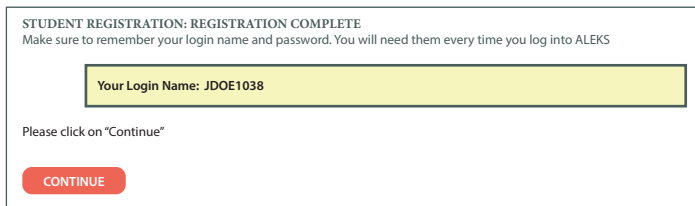


3. If you have a working web cam, reliable Internet and your device will support the use of a lockdown browser, proceed to step 4.
4. Enter the class code: U VXVC-CTUDG. It should display the following:

Class Code: U VXVC-CTUDG
Class: Incoming Students - Virtually Proctored, Fall - Summer 2024
Subject: Higher Education Math Placement
Class Dates: 07/08/2023 - 07/08/2024
Institution: Cecil College

If it does, click confirm and proceed to step 5. If it does not, go back one screen and check the code you entered.

5. Click continue. Enter your personal information. *You **MUST** use your @chawk.cecil.edu email. You can find your email on your acceptance letter.
For new students it will be the first five letters of your last name followed by the last five of your ID#
i.e. John Walker # 123456 will be walke23456@chawk.cecil.edu
6. Once you have completed this section, you will receive a user name to use for ALEKS PPL. Be sure to write down the username, as you will need it each time you log in.
DO NOT create multiple accounts.



7. After you are logged into ALEKS, you will be taken to the ALEKS Placement, Preparation and Learning First Time User Experience. This includes:
 - a. An introduction to ALEKS PPL and how it works
 - b. A student survey
 - c. A tools tutorial that shows you how to input your answer

8. Once you have completed the First Time User Experience, you are ready to take the **practice assessment**. Take your time, and complete the assessment without any outside help. Once you have completed your assessment, the program will let you know where you would have placed. From this point, you have two options:

- a. If you are satisfied with where you have placed, you can take your Proctored Assessment.
 - i. Your assessment will be available 24 hours after you complete the practice assessment.
 - ii. Please read the ALEKS Online Placement tips before beginning your assessment
- b. You can work in the Prep and Learning module assigned to you to help improve your placement results before taking the Proctored Assessment.

9. Please note that the Assessment allows for the following:
 - a. Test 1: Practice
 - b. Test 2: Proctored
 - c. Test 3: Practice
 - d. Test 4: Proctored

ALEKS Online Placement Tips

Before Starting your Assessment

1. Make sure you have a proper device: Windows running 10, 8, or 7
 - Mac running OS X 10.10+
 - iPad App running iOS 9+
2. Find a place where you are alone and will not be interrupted.
3. Gather your calculator (not cell phone), scrap paper and pencil.
4. Grab your photo ID - Cecil College ID, Driver's License or Permit.

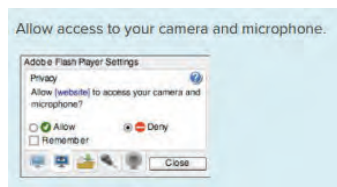
Starting Your Placement

You should see "Unproctored – Lockdown Browser + Webcam" on the left hand purple box. Select the "Get Started" button below it. Then Click on "Launch Lockdown Browser" at the bottom of the screen. If you do not have the browser installed, it will prompt you to download and install it at this time.



Beginning the Respondus Monitor Sequence

1. Click Agree to the Student Terms of Use
2. Allow Access to your camera and microphone. Select ALLOW, REMEMBER and CLOSE



3. Complete the audio and video checks
4. Take a photo of your ID using your webcam
5. Record a video of your surroundings. You must show your entire area including workspace.
6. Make sure the camera is adjusted so that you and your work area are visible. The video and audio must be enabled at all times.
7. Begin your assessment.

If you have any questions about this process, please contact the Academic Success Center at ASC@cecil.edu or 443-715-3292.